



Alphabet Square, London, , E3 3RT
£2,500 Per Month

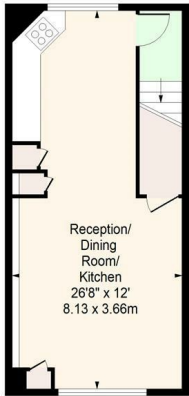
Elms Estates are delighted to have available to rent this large 4 bedroom house arranged over four floors and situated within a peaceful, secure gated development. The Property benefits from Gas Central Heating, Double Glazing and a Car Parking Space. Available from the 1st August. Please call to arrange a viewing.



- Exterior
- Open Plan Kitchen
- Open Plan Living Area
- Upper Ground Floor Reception
- Shower Room
- Bedroom 1
- Bedroom 2
- Bedroom 3
- Bedroom 4
- Bathroom
- View of Alphabet Square from Balcony
- River Frontage

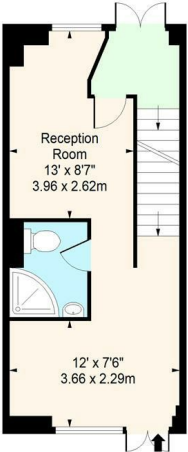


Alphabet Square, London, E3
Approx. Gross Internal Area 1268 Sq Ft - 117.80 Sq M



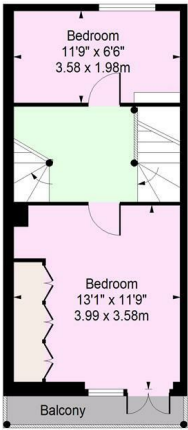
Lower Ground Floor

Floor Area 317 Sq Ft - 29.45 Sq M



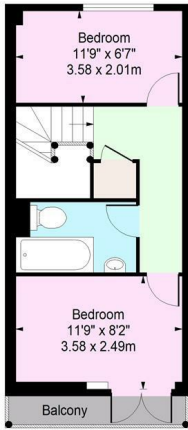
Raised Ground Floor

Floor Area 328 Sq Ft - 30.47 Sq M



First Floor

Floor Area 312 Sq Ft - 28.98 Sq M



Second Floor

Floor Area 311 Sq Ft - 28.89 Sq M

For Illustration Purposes Only - Not To Scale
www.londonpropertyassessments.co.uk

